

ANCHORSEAL®

End Sealer for Logs & Lumber

Now selling
AS2 Hybrid End Sealer!

New 'Green' Technology
Enhanced Performance



The sealer of choice for nearly 30 years. ANCHORSEAL creates a wax barrier that protects against end checking and costly degrade in freshly sawn logs and lumber. Known in the forest products industry as the best quality and most stable wax emulsion end sealer available.

THE BENEFITS OF ANCHORSEAL

When applied immediately after sawing, ANCHORSEAL:

- Prevents up to 90% or more of end checking (drying splits)
- Reduces losses: Conserves resources and improves yield
- Can help reduce blue stain in logs

Proven Results:

At Virginia Tech, research found that 5/4 (3.2 cm) green lumber that was end coated within three days of sawing produced a 4% greater yield by reducing end checking.

At the University of Wisconsin, research found that end coating freshly sawn logs reduced end checking by 6" (15 cm) and reduced log stain by 9" (23 cm) after weeks of storage.

Results show that logs and lumber protected with ANCHORSEAL are significantly more valuable than uncoated logs and lumber.



APPLICATION, COVERAGE & USE

- Similar in viscosity to latex paint, ANCHORSEAL is easily brushed or sprayed on.
- One gallon covers approximately 100 square feet (2.5 m² / liter), or three bundles of lumber (15 to 20 logs) on both ends, depending upon application method.

PROPERTIES & STORAGE

- ANCHORSEAL is a stable, non-toxic, non-hazardous wax and water emulsion.
- ANCHORSEAL should be kept in temperature controlled areas above 50°F/10°C and is not combustible unless dried and exposed to temperatures in excess of 400°F/205°C. Winterized formulations will protect against freeze damage.
- Appearance: Viscous, white liquid that dries clear (unless pigmented)
- Viscosity: 2000 cps.
- Specific Gravity: 0.95 (8 lbs. per gallon / .95 kg per liter)



U·C COATINGS CORPORATION

"We're more than just end coatings"

PO Box 1066
Buffalo, NY 14215, USA
tel: 1 (716) 833-9366
fax: 1 (716) 833-0120
1-888-END-COAT
www.uccoatings.com

DIRECTIONS FOR USE

The sooner ANCHORSEAL is applied to lumber or log ends after end trimming, the more effective it will be in preventing end checking and degrade.

- **Equipment:** ANCHORSEAL can be applied with a brush, roller, or with spraying equipment. We recommend using one of the following sprayers, available from U·C Coatings:

#PE4102 Electric Sprayer

#PG6500H Gas Engine Sprayer

#PD200 Air Operated Sprayer

#BP6121 Backpack Sprayer

#SS6003 Slide Sprayer

When using spraying equipment not purchased from U·C Coatings, be sure the tip has a .021" (.55 mm) or larger opening.

- **Application:** ANCHORSEAL should be applied "to the drip". Apply as much as the lumber or log will hold, until it begins to drip slightly. If there is no drip, you may be applying too little. If there is a heavy drip, you may be applying too much. Logs over 24" (60 cm) should be coated very heavily or twice within a 15 minute period to preserve value.
- **Clean-Up:** Use hot, soapy water to clean equipment. Solvent cleaners are not recommended or needed.



PURCHASE OPTIONS

- Available in clear or colors
- Available in winterized formulations to protect against freeze damage
(Winter-based coatings protected with antifreeze will withstand exposure to temperatures below 32°F. This protection allows coatings to bond to the ends of cold/frozen logs and lumber. U·C Coatings takes no responsibility for products not protected with antifreeze that are frozen after delivery.)

- Available Quantities:

Industrial

275-gallon tote

55-gallon drum

5-gallon pail

Retail

2-gallon pail

1-gallon can

1-quart can

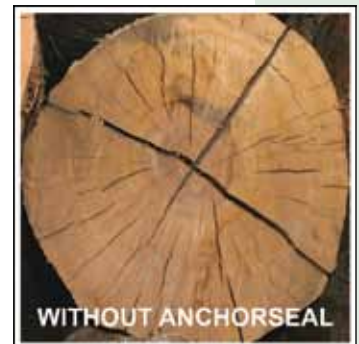
- **Pricing information:** Please refer to the **ANCHORSEAL Price List (US & Canada)**

- **Place an order:**

US/CN Toll Free: **1-888-END-COAT**

Outside US/CN: **+1 (716) 833-9366**

On the Web: **www.uccoatings.com**



U·C COATINGS CORPORATION

"We're more than just end coatings"