

COLOR-COTE®

A Bright, Uniform Colored End Sealer

A thin, highly pigmented wax sealer for dried or partially dried lumber ends.

THE BENEFITS OF COLOR-COTE

When applied immediately after drying and/or end trimming, COLOR-COTE:

- Provides bright, uniform color
- Prevents new end checking (drying splits) in dried or partially dried lumber

APPLICATION, COVERAGE & USE

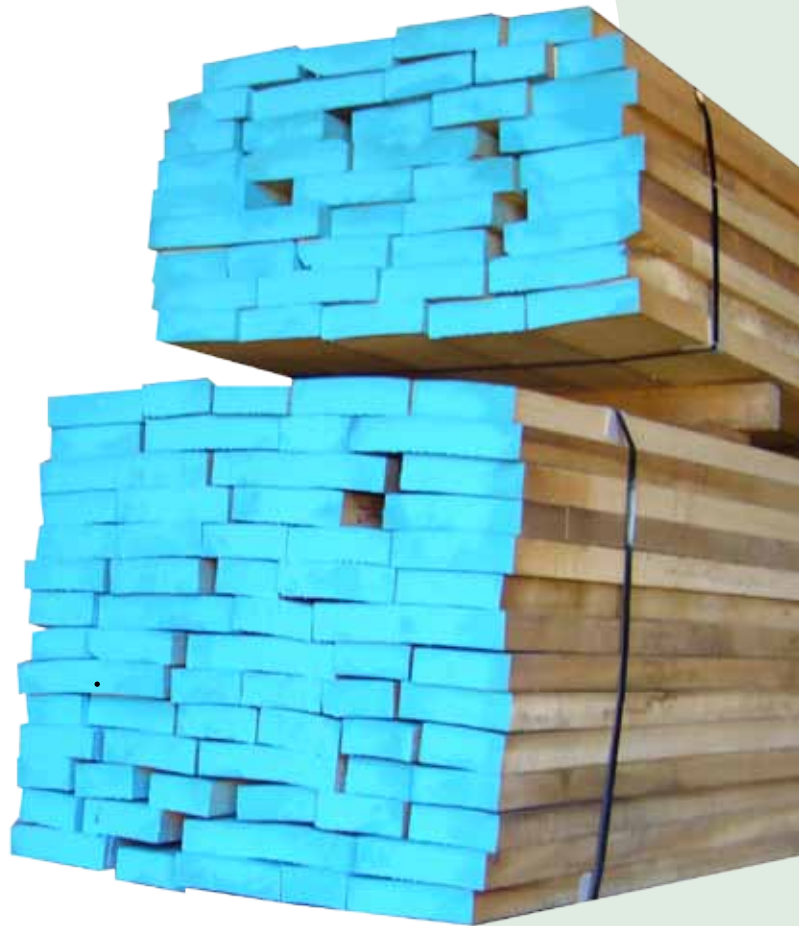
- COLOR-COTE can be applied by most sprayers.
- One gallon covers approximately 150-200 square feet, depending upon application method.

PROPERTIES & STORAGE

- COLOR-COTE is a stable, non-toxic, non-hazardous wax and water emulsion.
- COLOR-COTE should be kept in temperature controlled areas above 50°F/10°C and is not combustible unless dried and exposed to temperatures in excess of 400°F/205°C. Winterized formulations will protect against freeze damage.

DIRECTIONS FOR USE

The sooner COLOR-COTE is applied to lumber after end trimming, the more effective it will be in preventing end checking and degrade.



U·C COATINGS CORPORATION

"We're more than just end coatings"

PO Box 1066
Buffalo, NY 14215, USA
tel: 1 (716) 833-9366
fax: 1 (716) 833-0120
1-888-END-COAT
www.uccoatings.com

DIRECTIONS FOR USE (CONT.)

- **Equipment:** COLOR-COTE can be applied with spraying equipment. We recommend using one of the following sprayers, available from U·C Coatings:

#PE4102 Electric Sprayer

#BP501 Backpack Sprayer

#PG6500H Gas Engine Sprayer

When using spraying equipment not purchased from U·C Coatings, delivery of .2 gpm works best.

- **Application:** COLOR-COTE should be applied “to the drip”. Apply as much as the lumber or log will hold, until it begins to drip slightly. If there is no drip, you may be applying too little. If there is a heavy drip, you may be applying too much.
- **Clean-Up:** Use hot, soapy water to clean equipment. Solvent cleaners are not recommended or needed.

PURCHASE OPTIONS

- Available in various colors
- Available in winterized formulations to protect against freeze damage
(Winter-based coatings protected with antifreeze will withstand exposure to temperatures below 32°F. This protection allows coatings to bond to the ends of cold/frozen logs and lumber. U·C Coatings takes no responsibility for products not protected with antifreeze that are frozen after delivery.)
- Available Quantities:
 - 275-gallon tote
 - 55-gallon drum
 - 5-gallon pail
- **Pricing information:** Please refer to the **U·C Coatings Product Price List (US & Canada)**
- **Place an order:**
 - US/CN Toll Free: **1-888-END-COAT**
 - Outside US/CN: **+1 (716) 833-9366**
 - On the Web: **www.uccoatings.com**



U·C COATINGS CORPORATION

“We’re more than just end coatings”